

**TRESPA® METEON®
METALLICS AND FOCUS**

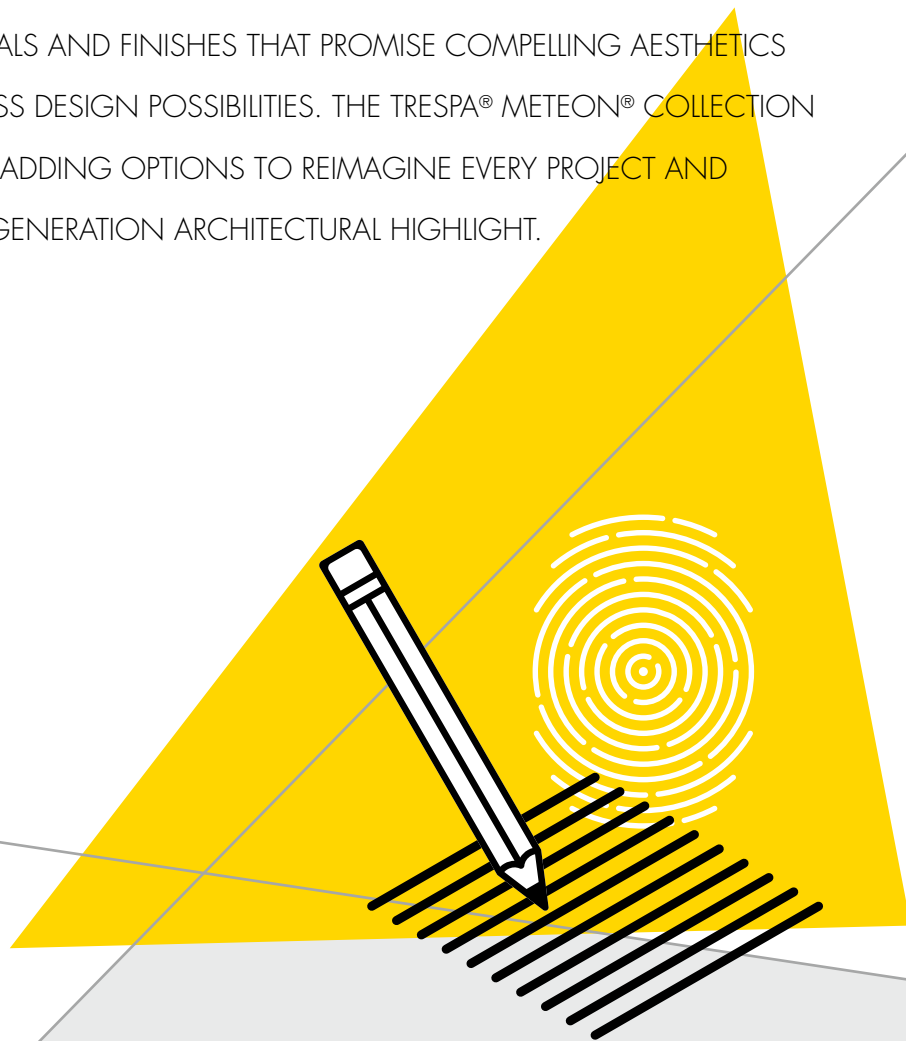
NUANCES
MAKE THE
DIFFERENCE

Think Trespa

TRESPA®

WHERE COMPELLING AESTHETICS AND LIMITLESS DESIGN POSSIBILITIES MEET

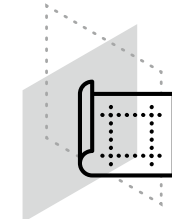
DISCOVER AN ENORMOUS RANGE OF DESIGNS. UNIQUE PATTERNS. RHYTHMS AND DEPTHS. AND ENDLESS, LONG-LASTING COLOURS. ALL BROUGHT TOGETHER IN HIGH-END MATERIALS AND FINISHES THAT PROMISE COMPELLING AESTHETICS AND ALMOST LIMITLESS DESIGN POSSIBILITIES. THE TRESPA® METEON® COLLECTION OFFERS HIGH-END CLADDING OPTIONS TO REIMAGINE EVERY PROJECT AND DESIGN YOUR NEXT-GENERATION ARCHITECTURAL HIGHLIGHT.



Create perfect one-of-a-kind effects. Or simply look for other value-adding options to determine a distinctive look and underline the qualities of a building. All according to your vision and ideas. It's now possible, with Trespa® Meteon®.

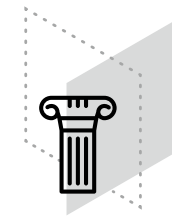
EVERYTHING YOU WANT

This stunning collection features cladding panels for innovative and functional ventilated façade systems, balconies, and sunblind solutions. Available in a broad range of looks, such as Metallics, Lumen, Focus, Naturals and Woods. You even can pick different colours and finishes. Allowing you to realize almost everything you want, exactly in the way you want.



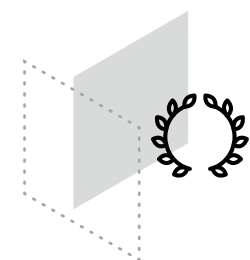
LONG-LASTING ENJOYMENT

The entire collection is highly weather resistant, so sun and rain will have no significant effect on a panel's surface. They're also easy to clean and highly scratch and impact resistant. And they all come with a 10-year limited warranty.



HIGH-END QUALITY

Trespa® Meteon® is a decorative high-pressure compact laminate (HPL) with an integral surface manufactured using Trespa's unique in-house technology: Electron Beam Curing (EBC). The blend of up to 70% natural fibres and thermosetting resins, manufactured under high pressures and temperatures, yields a highly stable, dense panel with good strength-to-weight ratio.



METEON® METALLICS

NUANCES MAKE THE DIFFERENCE

Beautiful sparkles and flares. Modern and industrial looks, with nuances that make the difference. Reflections bring new dimensions to the design, by creating a different look from every angle. The result: each design has its own appearance, using metallics to create new façades with high-end aesthetics. This is the Trespa® Meteon® Metallics collection, adding more nuances to modern and industrial designs.

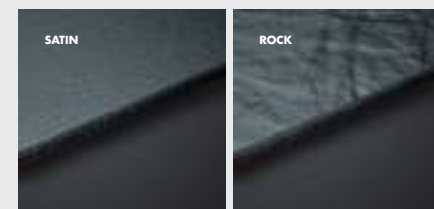
The Trespa® Meteon® Metallics collection enables you to create endless abstract variations. Not just in colour, but also in structure and finishes that will bring your designs to life, time and time again.



DISCOVER THE TRESPA® METEON® METALLICS COLLECTION AND REIMAGINE YOUR NEXT PROJECT



FINISHES



For more information on the finishes please see page 18

THE SPACE BY IOHOUSE

SUSTAINABLE SOPHISTICATION TAKES PREFAB TO NEW HEIGHTS



“Our starting point was ambitious: to redefine modern living, no less. The SPACE is about reconnecting with Nature and behaving sustainably, yet without any sacrifice in terms of comfort and style. We have aimed at creating a piece of livable art that will work in the most diverse surroundings. We looked around for a cladding product that would live up to our concept: it was crucial to choose an exterior material that would convey the sophistication and the pioneering profile of the SPACE, meet our aesthetic expectations, and be sustainable in itself. The latter criterium was all the more easily met as Trespa® panels contain up to 70% natural fibre. In addition, they are particularly long-lasting and virtually maintenance-free, thus reducing even further their global impact on the environment.”

Mario Ojalo, CEO of iOhouse

“As far as company values are concerned, iOhouse and Trespa are, quite simply, a perfect match. Trespa has pioneered innovative building materials for half a century, and we are in the process of re-inventing the market for off-the-grid living. We both aim at high-end, original and beautiful solutions. Therefore, I think that underscoring our successful partnership is benefitting both companies. Obviously, at a time when people increasingly seek a more natural, and yet essentially ‘modern’ and stylish lifestyle, our SPACE concept is spot-on. In this respect as well, partnering with Trespa was the right decision: the Trespa® Meteon® panels help make our focus on quality, innovation and design immediately obvious.”

Heliis Tiitma, iOhouse’s Sales Manager



TRESPA® METEON® METALLICS AND FOCUS
SUSTAINABLE SOPHISTICATION



MANNIVA, ESTONIA

ARCHITECT	JAAN TIIDEMANN & TOMOMI HAYASHI
MARKET SEGMENT	INDIVIDUAL HOUSING
BUILD TYPE	NEW CONSTRUCTION
USE	FAÇADES
FIXING SYSTEM	INVISIBLE FIXING WITH ADHESIVE ON ALUMINIUM SUB-FRAME
CONSTRUCTION YR.	2020



DISCOVER THE PROJECT

M21.8.1
GRAPHITE GREY



M21.8.1
GRAPHITE GREY

RUNDESKOGEN RESIDENTIAL

A SENSE OF SPACE AND OPENNESS

METEON® FOCUS

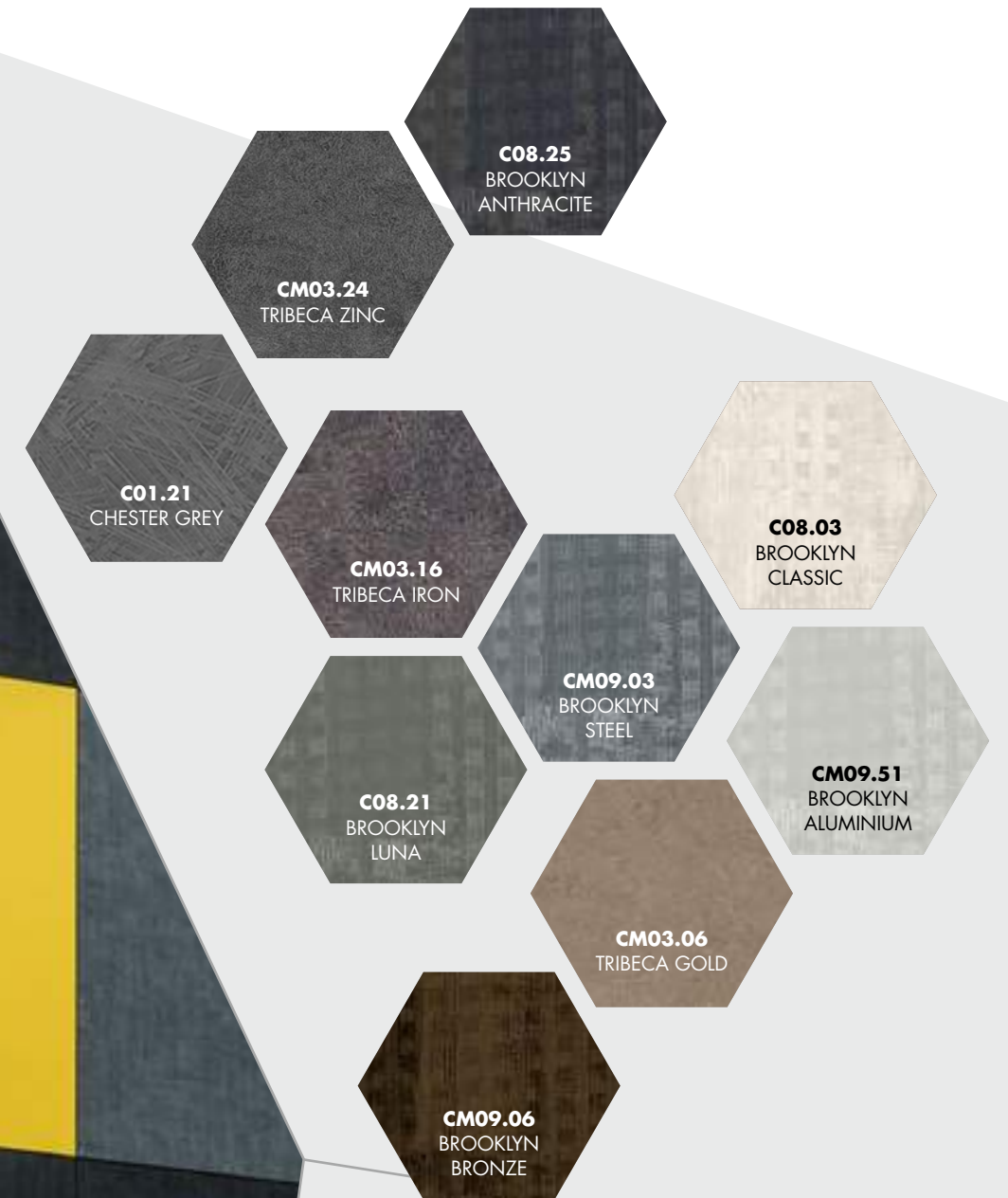
INSPIRING STRUCTURES THAT INSPIRE NEW THINKING

Discover new abstract patterns, with traces of character left behind. Textured surfaces, colours that merge, and unique designs; they all come together in the Trespa® Meteon® Focus collection. It creates an extraordinary look and feel, for outstanding projects that need to breathe something special. The Trespa® Meteon® Focus collection finds its inspiration in places from around the world, brought to life in three ranges: Tribeca, Brooklyn, and Chester.

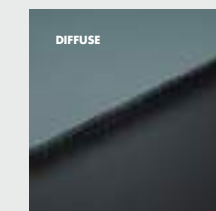
Each range comes in signature colours and offers the freedom to combine them with others to realise your vision. The result is an inspiring group of materials, that will inspire new thinking, new designs and new ideas.



DISCOVER THE TRESPA® METEON® FOCUS
COLLECTION AND REIMAGINE YOUR
NEXT PROJECT



FINISHES



For more information on the finishes please see page 19



HOTEL TRAMUNTANA, SPAIN

ARCHITECT	VILANOVA ARQUITECTES
MARKET SEGMENT	LEISURE, CULTURAL, SPORTS
BUILD TYPE	NEW CONSTRUCTION
USE	FAÇADES
FIXING SYSTEM	TS200
CONSTRUCTION YR.	2018



DISCOVER THE PROJECT



CM09.51
BROOKLYN ALUMINIUM

C08.21
BROOKLYN LUNA

CM09.03
BROOKLYN STEEL

C08.25
BROOKLYN ANTHRACITE

CAFETERIA

CM09.51
BROOKLYN ALUMINIUM

C08.25
BROOKLYN ANTHRACITE

C08.21
BROOKLYN LUNA

CM09.03
BROOKLYN STEEL

TRIBECA

It's an abstract interpretation of a cityscape, in which each building is individually designed and built but the whole view gives a totally new sensation. The designs are defined by light reflection and the contours of different buildings stacked against each other in serendipitous ways.

BROOKLYN

BROOKLYN

Brooklyn cladding panels find inspiration in the ephemeral nature of tracks and traces. Used in books and in movies as elements that evoke interest and suspense, these barely discernible impressions are fascinating in that they only reveal part of the story.

CHESTER

Inspired by a rich local geology of Millstone Grit and Limestone, Chester allows for creative and robust industrial looks in concrete whilst bringing a sense of vibrancy. It's a massive impression, yet sophisticated and modern.

CHESTER

TRESPA® METEON® METALLICS AND FOCUS

OUR DELIVERY PROGRAMME

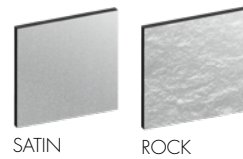
METALLICS

Colour code	Colour name	Satin			Rock*		
		■	■	■	■	■	■
M04.4.1	Titanium Silver	■	■	■	■	■	■
M05.5.1	Titanium Bronze	■	■	■	■	■	■
M05.6.1	Urban Brown	■	■	■	■	■	■
M06.4.1	Amber	■	■	■	■	■	■
M21.3.4	Azurite Blue	■	■	■	■	■	■
M21.8.1	Graphite Grey	■	■	■	■	■	■
M51.0.1	Aluminium Grey	■	■	■	■	■	■
M51.0.2	Urban Grey	■	■	■	■	■	■
M53.0.1	Copper Red	■	■	■	■	■	■
M53.0.2	Copper Yellow	■	■	■	■	■	■

TRESPA® METEON® METALLICS PANELS FEATURE A DIRECTIONAL COLOURED SURFACE.

*WITH SATIN REVERSE.

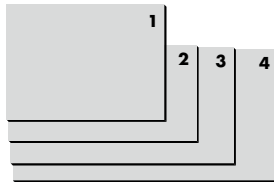
FINISHES



TYPES

- **SINGLE SIDED DECORATIVE** DECORATIVE SIDE WITH NON DECORATIVE BLACK REVERSE
- **DOUBLE SIDED DECORATIVE** SAME COLOUR FOR FRONT AND REVERSE SIDE OF THE PANEL
- **VARITOP** DECORATIVE SIDE WITH STANDARD WHITE DECORATIVE SATIN REVERSE (A03.0.0)

SIZES



- 1** 2550 x 1860 mm (≈ 100 x 73 inch)
- 2** 3050 x 1530 mm (≈ 120 x 60 inch)
- 3** 3650 x 1860 mm (≈ 143 x 73 inch)
- 4** 4270 x 2130 mm (≈ 168 x 83 inch)

*THE LARGE SIZE OF THIS PANEL ALLOWS AN EFFICIENT MACHINING OF THE PRODUCT.

FOR THE METEON® METALLICS, TRESPA IS HAPPY TO CREATE PANELS IN BESPOKE COLOURS FOR YOUR PROJECT. ALMOST ANYTHING IS POSSIBLE, JUST TELL US WHAT YOU NEED. FOR MORE INFORMATION PLEASE CONTACT YOUR LOCAL TRESPA REPRESENTATIVE.

THICKNESSES

- 6 mm (≈ 1/4 inch)
- 8 mm (≈ 5/16 inch)
- 10 mm (≈ 3/8 inch)
- 13 mm (≈ 1/2 inch)

FOR TECHNICAL INFORMATION LIKE FIXING POSSIBILITIES PLEASE VISIT OUR WEBSITE WWW.TRESPA.INFO



FOCUS

Colour code	Colour name	Diffuse	
		■	■
C08.03	Brooklyn Classic	■	■
C08.21	Brooklyn Luna	■	■
C08.25	Brooklyn Anthracite	■	■
C01.21	Chester Grey	■	■
With metallic effect			
CM03.06	Tribeca Gold	■	■
CM03.16	Tribeca Iron	■	■
CM03.24	Tribeca Zinc	■	■
CM09.03	Brooklyn Steel	■	■
CM09.06	Brooklyn Bronze	■	■
CM09.51	Brooklyn Aluminium	■	■

TRESPA® METEON® FOCUS PANELS FEATURE A DIRECTIONAL COLOURED SURFACE.

FINISHES

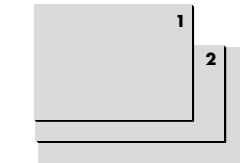


DIFFUSE

TYPES

- **SINGLE SIDED DECORATIVE** DECORATIVE SIDE WITH NON DECORATIVE BLACK REVERSE
- **VARITOP** DECORATIVE SIDE WITH STANDARD WHITE DECORATIVE SATIN REVERSE (A03.0.0)

SIZE



- 1** 2550 x 1860 mm (≈ 100 x 73 inch)
- 2** 3050 x 1530 mm (≈ 120 x 60 inch)
- 3** 3650 x 1860 mm (≈ 143 x 73 inch)

NOTE: FULL SIZE PANELS FEATURE A SQUARENESS TOLERANCE.

THICKNESSES

- 8 mm (≈ 5/16 inch)
- 10 mm (≈ 3/8 inch)
- 13 mm (≈ 1/2 inch)

NOTE

FOR AVAILABLE SHEET SIZES, THICKNESSES AND FINISHES IN YOUR COUNTRY, PLEASE CHECK **TRESPA.INFO** FOR THE DETAILED AND UP TO DATE DELIVERY PROGRAMME AND MATERIAL PROPERTY DATASHEET. ALTERNATIVELY YOU CAN USE THE PRODUCT SELECTOR ON **TRESPA.COM** (AFTER CHOOSING THE COUNTRY WHERE THE PROJECT IS LOCATED).

ORDER YOUR FREE METALLICS SAMPLE



ORDER YOUR FREE FOCUS SAMPLE



CONTACT US

TRESPA INTERNATIONAL B.V.

P.O. Box 110, 6000 AC Weert
Wetering 20, 6002 SM Weert
The Netherlands
www.trespa.com

UNITED KINGDOM & IRELAND

TRESPA UK LTD.

Coast Road
North Shields
Tyne & Wear, NE29 8RE
United Kingdom
Tel: 0808-2340268
Info.UK@Trespa.com

EMEA & APAC EXPORT CUSTOMER SERVICE DESK

Tel: +31 (0) 495 458 839
Info.Export@Trespa.com

VISIT US

TRESPA DESIGN CENTRE WEERT

Wetering 20
6002 SM Weert
The Netherlands
Tel: +31 (0) 495 458 845
TDC.Weert@Trespa.com
www.trespa.com

TRESPA DESIGN CENTRE BARCELONA

Calle Ribera 5,
08003 Barcelona
Spain
Tel: +34 (0) 93 295 4193
TDC.Barcelona@Trespa.com
www.trespa.com

FOLLOW US



DISCLAIMER

GENERAL

These terms apply to the use of this document and such use automatically means that the other party agrees to these terms. The information provided by Trespa International B.V. ("Trespa") in this document is solely indicative. Trespa is unable to warrant the accuracy and completeness of this information. Trespa may change the information included in this document at any time and without further notice. Trespa's customers and third parties must ascertain that they have the most recent document (for the most recent version, please consult: www.trespa.com). No rights can be derived from the information provided; the use of the information is at the other party's risk and responsibility. Trespa does not warrant that the information in this document is suitable for the purpose for which it is consulted by the other party. This document does not contain any design, structural calculation, estimate or other warranty or representation that customers and third parties may rely on. This document does not guarantee any properties of Trespa products. Colours used in Trespa's communications (including but not limited to printed matter) and in samples of Trespa's products may differ from the colours of the Trespa products to be supplied. Samples are not intended for use in product tests and are not representative of characteristics of the Trespa

products. Trespa's products and samples are produced within the specified colour tolerances and the colours (of production batches) may differ, even if the same colour is used. The viewing angle also influences the colour perception. Metallics panels feature a surface whose colour appears to change based on the direction from which it is viewed. The specified colour stability and colour specifications relate only to the decorative surface of the Trespa products, not to the core material and samples of the Trespa products. Trespa products are delivered ex-works with straight, sawn sides. Customers and third parties must have a professional adviser inform them about (the suitability of) the Trespa products for all desired applications and about applicable laws and regulations. Trespa does not warrant the above. The most recent version of the current delivery programme and the Material Properties Datasheet can be found at www.trespa.info. Only the information in the most recent and valid Material Property Datasheet should be used to select and provide advice regarding Trespa products. Trespa reserves the right to change (the specifications for) its products without prior notice.

LIABILITY

Trespa is not liable (neither contractual nor non-contractual) for any damage arising from or

related to the use of this document, except if and to the extent that such damage is the result of wilful misconduct or gross negligence on the part of Trespa and/or its management. The limitation of liability applies to all parties affiliated with Trespa, including but not limited to its officers, directors, employees, affiliated enterprises, suppliers, distributors, agents, and representatives.

GENERAL CONDITIONS

All oral and written statements, offers, quotations, sales, supplies, deliveries and/or agreements and all related activities of Trespa are governed by the Trespa General Terms and Conditions of Sale (*Algemene verkoopvoorwaarden Trespa International B.V.*) filed with the Chamber of Commerce and Industry for Noord- en Midden- Limburg in Venlo (NL) on 9th May 2023 under number 24270677, which can be found on and downloaded from the Trespa website, www.trespa.com/documentation. All oral and written statements, offers, quotations, sales, supplies, deliveries and/or agreements and all related work of Trespa North America, Ltd. are governed by the Trespa North America General Terms and Conditions of Sale, which can be found on and downloaded from the Trespa website, www.trespa.com/documentation. A copy of these general conditions of sale will be provided free of

charge on request. All general terms and conditions other than the conditions mentioned above are dismissed and do not apply, regardless of whether such terms and conditions are referred to on requests for offers, offer confirmations, stationery and/or other documents of the other party, even if Trespa does not expressly object to such terms and conditions.

INTELLECTUAL PROPERTY

All intellectual property rights and other rights regarding the content of this document (including logos, text and photographs) are owned by Trespa and/or its licensors. Any use of the content of this document, including distribution, reproduction, disclosure, storage in an automated data file or the dispatch of such a file without Trespa's prior written consent is explicitly prohibited. * Trespa, Meteon, Athlon, TopLab, TopLab^{PLUS}, TopLab^{PLUS ALIGN}, TopLab^{ECO-FIBRE}, TopLab^{VERTICAL}, TopLab^{BASE}, Virtuon, Izeon, Pura, Pura NFC, Volkern, Trespa Essentials and Mystic Metallics are registered trademarks of Trespa.

QUESTIONS

Should you have any questions or comments, please do not hesitate to contact Trespa.



EN-GB2428-432596 ■ VERSION 2.0
BROCHURE CODE EN-GB2428 ■ DATE 10-2023

VISIT TRESPA.COM FOR THE MOST
UP TO DATE VERSION OF THIS DOCUMENT.

TRESPA®