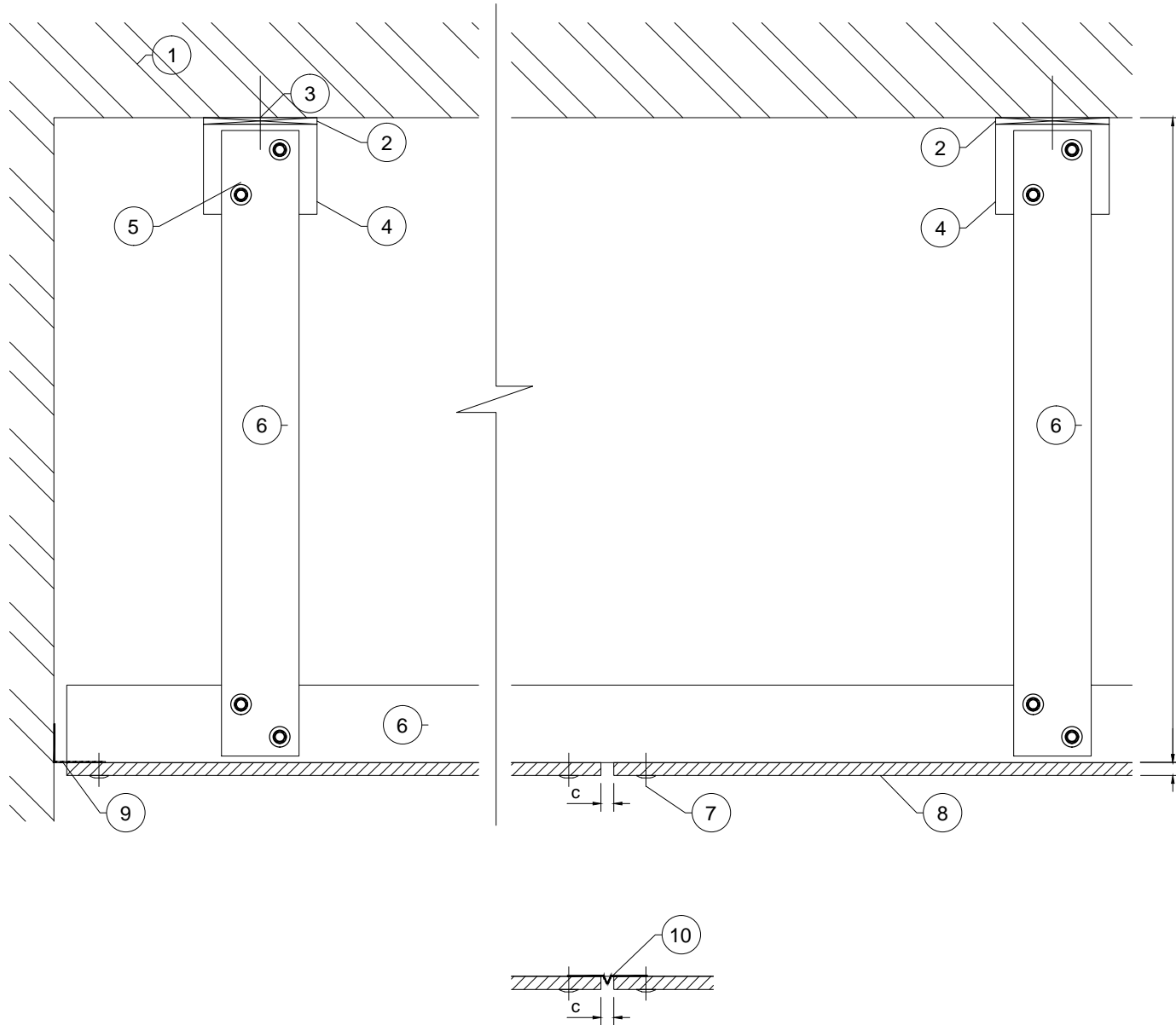


These drawings are indicative only, for use as a guide. The customer is always responsible for any specific design, structural calculations and calculating exact sizes of rails, sizes & quantities of panels. Any project details and calculations supplied by Architectural Panel Solutions are provided in good faith and should always be checked and approved by the project engineer responsible. Architectural Panel Solutions will not accept any liability should the system be designed / installed incorrectly.



Items	
1	Substrate (By Others)
2	DCS034 Isolator Pad
3	Primary fixing will vary subject to substrate composition*
4	DCS034 Single Wall Bracket*
5	FDS 5.5x25mm self-drilling screw
6	DCS031 60x40 L Rail
7	Colour Rivets to match panels *
8	Cladding panel
9	Ventilation Profile *
10	Birds Beak joint Profile *

\*Please refer to APS Downer Rainscreen Framing brochure

Dimensions	
a	Cavity / Drop (max. 1000mm)
b	Panel nominal thickness
c	Panel joint - Please refer to panel manufacturer.

**DOWNER**  
ORIGINAL HELPING HAND SYSTEM

**ARCHITECTURAL PANEL SOLUTIONS LIMITED**  
Unit 5, Wainwright Close, Churchfields Industrial Estate,  
St Leonards-on-Sea, TN38 0LP  
T: 01424 852641 F: 01424 852797  
claddings@architecturalpanelsolutions.com  
www.architecturalpanelsolutions.com

Drawing Title:

DCS034 - VISIBLE FIX - TYPICAL DETAILS  
VIEW 1 (END AND INTERMEDIATE DETAIL)

Drawing Ref:

DCS034-F01

Scale:

NTS  
@ A4

System:

DCS034

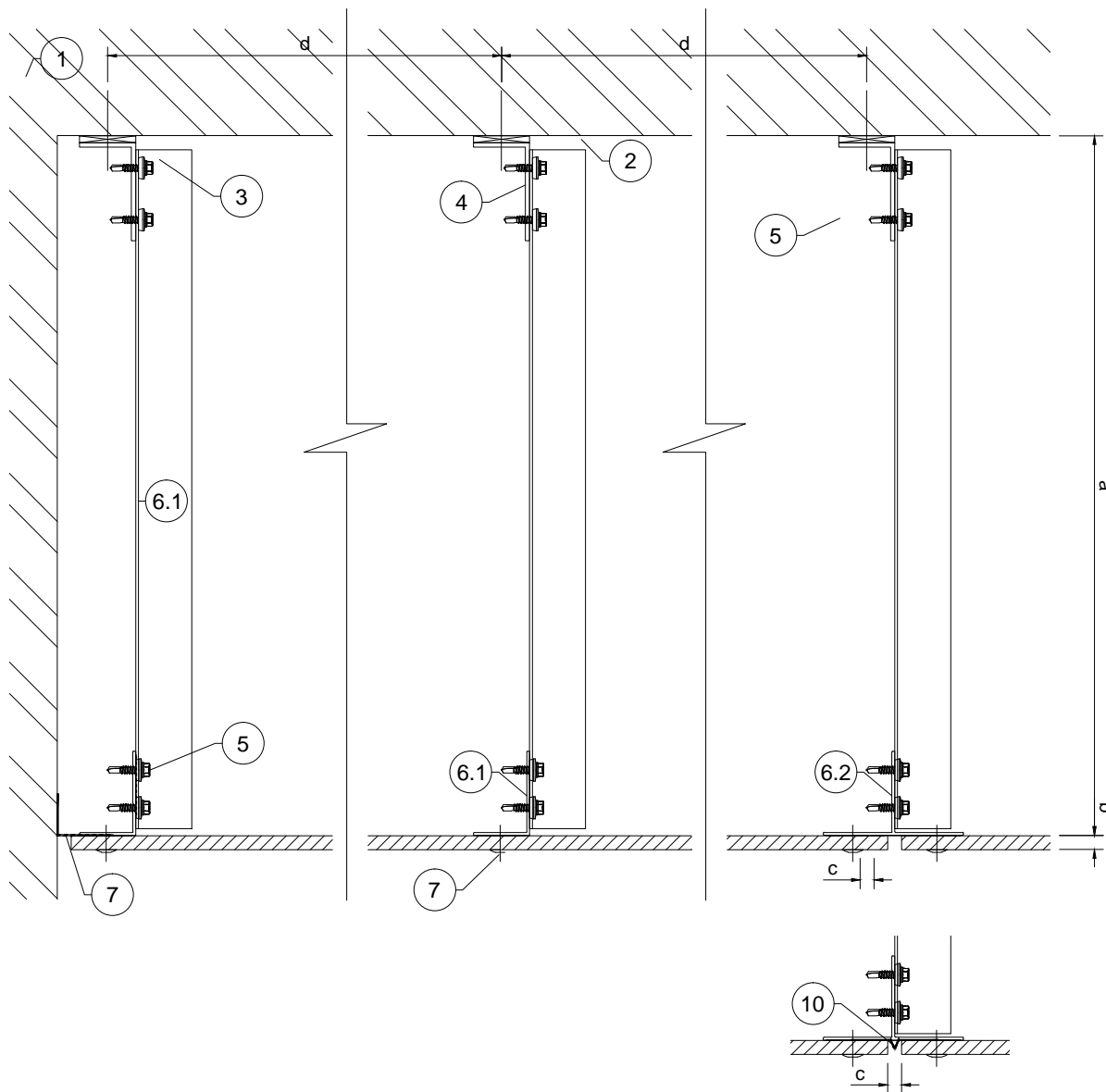
Date:

Sept-23

Drawn: J.B.

Rev.	/ /		
------	-----	--	--

These drawings are indicative only, for use as a guide. The customer is always responsible for any specific design, structural calculations and calculating exact sizes of rails, sizes & quantities of panels. Any project details and calculations supplied by Architectural Panel Solutions are provided in good faith and should always be checked and approved by the project engineer responsible. Architectural Panel Solutions will not accept any liability should the system be designed / installed incorrectly.



Items	
1	Substrate (By Others)
2	DCS034 Isolator Pad
3	Primary fixing will vary subject to substrate composition*
4	DCS034 Single Wall Bracket*
5	FDS 5.5x25mm self-drilling screw
6.1	DCS031 60x40 L Rail
6.2	DCS031 100x60 T Rail
7	Colour Rivets to match panels *
8	Cladding panel
9	Ventilation Profile *
10	Birds Beak joint Profile *

\*Please refer to APS Downer Rainscreen Framing brochure

Dimensions	
a	Cavity / Drop (max. 1000mm)
b	Panel nominal thickness
c	Panel joint - Please refer to panel manufacturer.
d	Bracket distance to suit cladding fixing centres

Rev.	/ /	
------	-----	--



**ARCHITECTURAL PANEL SOLUTIONS LIMITED**  
 Unit 5, Wainwright Close, Churchfields Industrial Estate,  
 St Leonards-on-Sea, TN38 0LP  
 T: 01424 852641 F: 01424 852797  
 claddings@architecturalpanelsolutions.com  
 www.architecturalpanelsolutions.com

Drawing Title:

**DCS034 - VISIBLE FIX - TYPICAL DETAILS**  
**VIEW 2 (END, INTERMEDIATE & PANEL JOINT DETAIL)**

Drawing Ref:

DCS034-F02

Scale:

NTS  
@ A4

System:

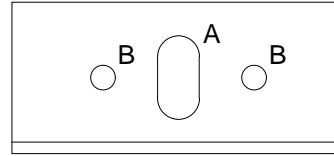
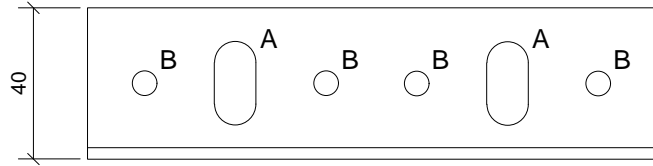
DCS034

Date:

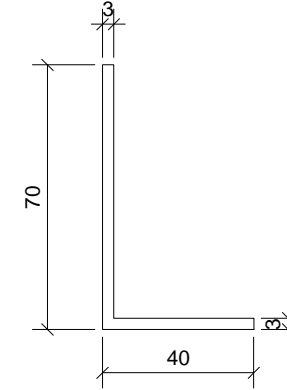
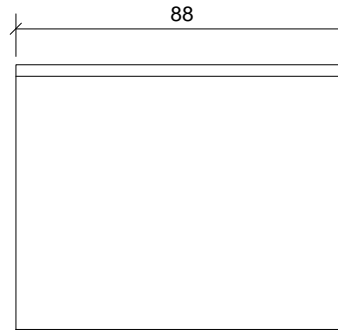
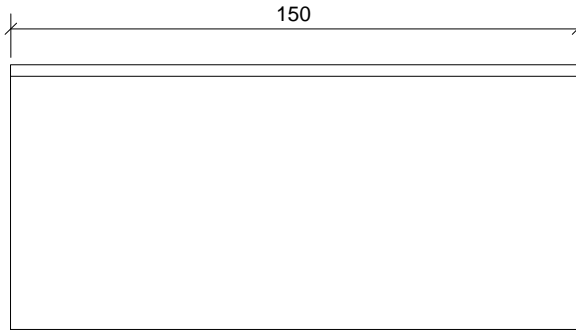
Sept-23

Drawn: J.B.

These drawings are indicative only, for use as a guide. The customer is always responsible for any specific design, structural calculations and calculating exact sizes of rails, sizes & quantities of panels. Any project details and calculations supplied by Architectural Panel Solutions are provided in good faith and should always be checked and approved by the project engineer responsible. Architectural Panel Solutions will not accept any liability should the system be designed / installed incorrectly.

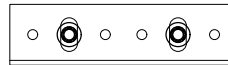
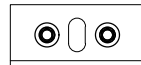


DCS034 BRACKET TYPE EXTRUDED ALLOY GRADE: 6063T6		
REF	DIM	A = 22mm x 11mm Slot B = 6.5mmØ Hole
HH-Single	88x70x40mm	
HH-Double	150x70x40mm	



Fixing to SFS / Timber  
through holes ('B')

Fixing to Concrete / Masonry  
through slots ('A')



Rev.	//		
------	----	--	--



**ARCHITECTURAL PANEL SOLUTIONS LIMITED**  
 Unit 5, Wainwright Close, Churchfields Industrial Estate,  
 St Leonards-on-Sea, TN38 0LP  
 T: 01424 852641 F: 01424 852797  
 claddings@architecturalpanelsolutions.com  
 www.architecturalpanelsolutions.com

Drawing Title:

**DCS034 -SOFFIT SYSTEM  
WALL BRACKET DETAILS**

Drawing Ref:

DCS034-F03

Scale:

NTS  
@ A4

System:

DCS034

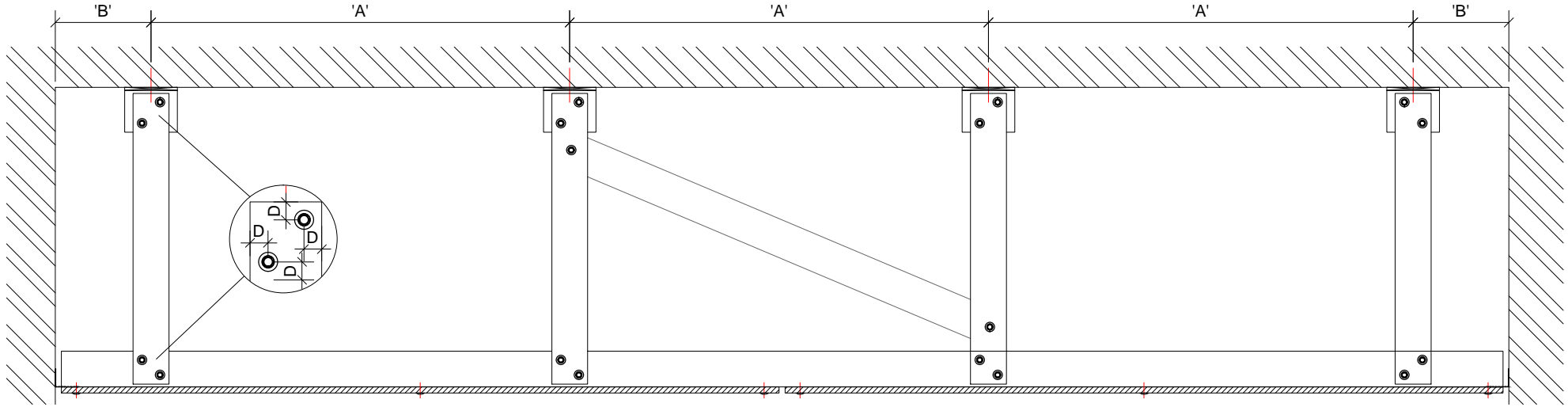
Date:

Sept-23

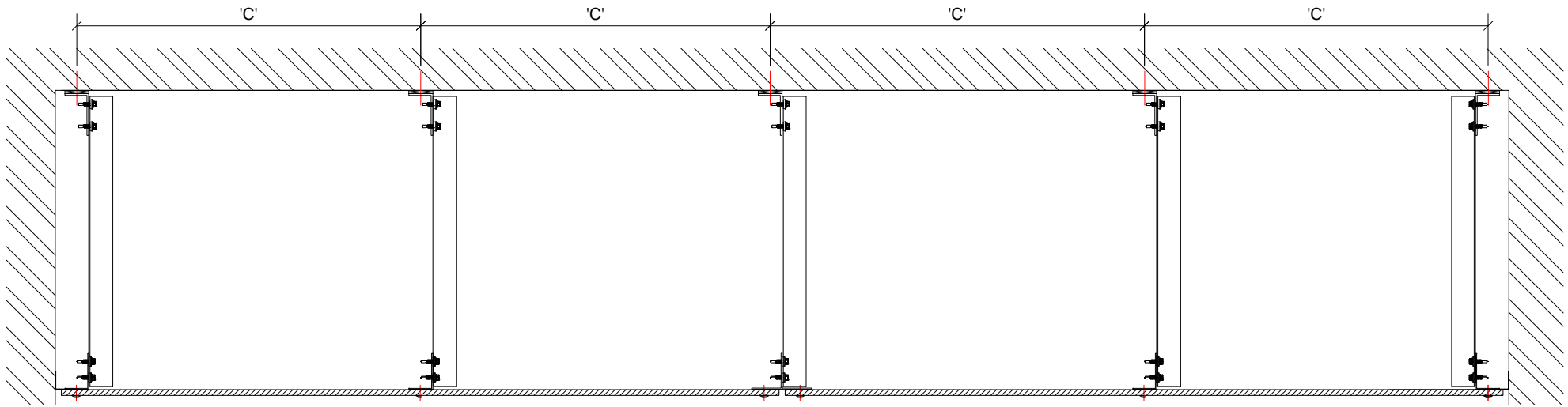
Drawn: J.B.

These drawings are indicative only, for use as a guide. The customer is always responsible for any specific design, structural calculations and calculating exact sizes of rails, sizes & quantities of panels. Any project details and calculations supplied by Architectural Panel Solutions are provided in good faith and should always be checked and approved by the project engineer responsible. Architectural Panel Solutions will not accept any liability should the system be designed / installed incorrectly.

### Typical Set-Out



### Typical Set-Out



**Key:-**  
 'A' = Ref. Calcs For Max. Spans      'C' = To suit cladding fixing centres  
 'B' = Ref. Calcs For Max. Cantilever      'D' = Min. 15mm from edges

Rev.	/ /		
------	-----	--	--



**ARCHITECTURAL PANEL SOLUTIONS LIMITED**  
 Unit 5, Wainwright Close, Churchfields Industrial Estate,  
 St Leonards-on-Sea, TN38 0LP  
 T: 01424 852641 F: 01424 852797  
 claddings@architecturalpanelsolutions.com  
 www.architecturalpanelsolutions.com

Drawing Title:

**DCS034 SOFFIT SYSTEM  
 TYPICAL SET OUT**

Drawing Ref:

DCS034-F04

Scale:

NTS  
 @ A4

System:

DCS034

Date:

Sept-23

Drawn: J.B.