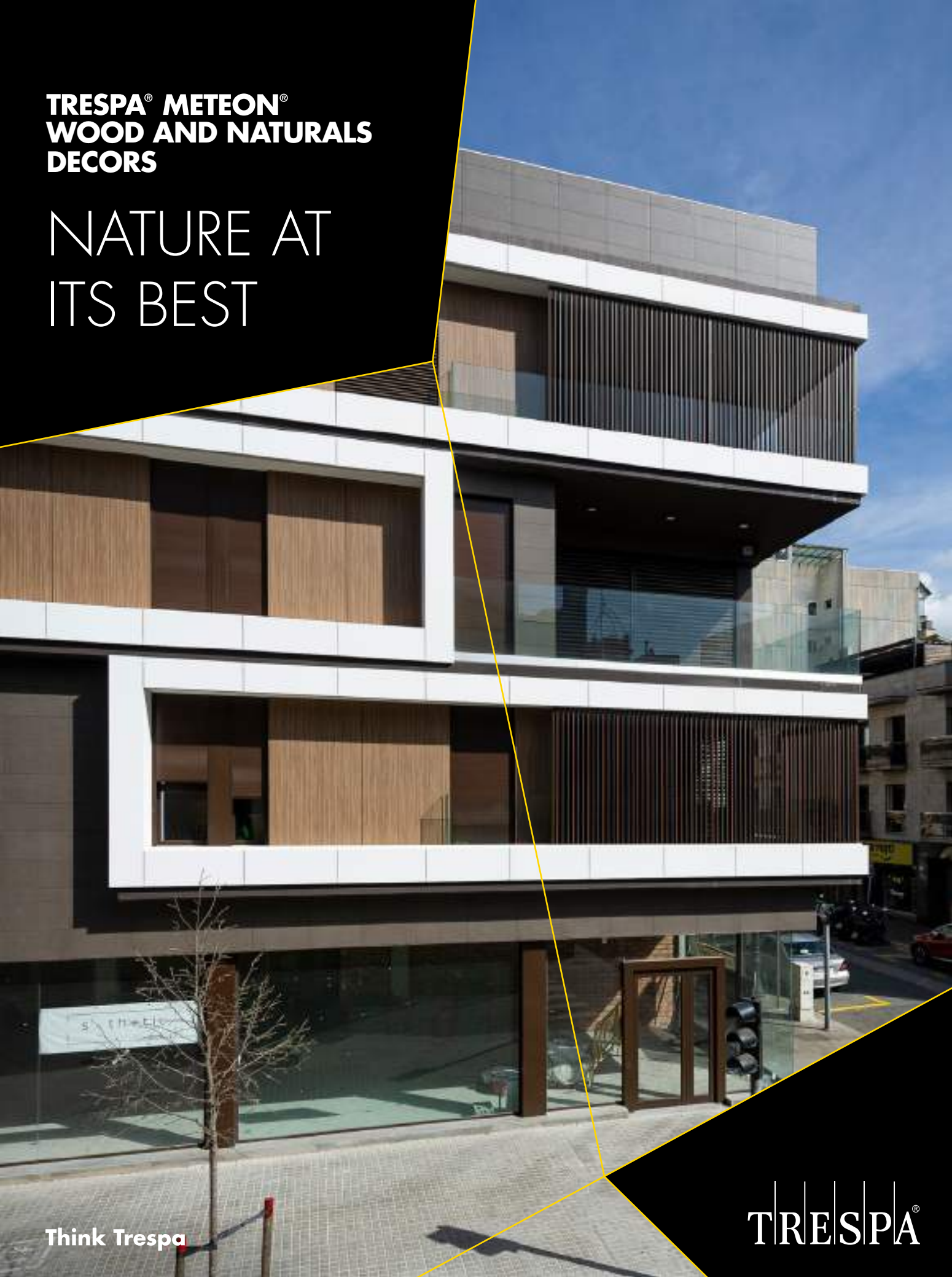


**TRESPA® METEON®  
WOOD AND NATURALS  
DECORS**

NATURE AT  
ITS BEST

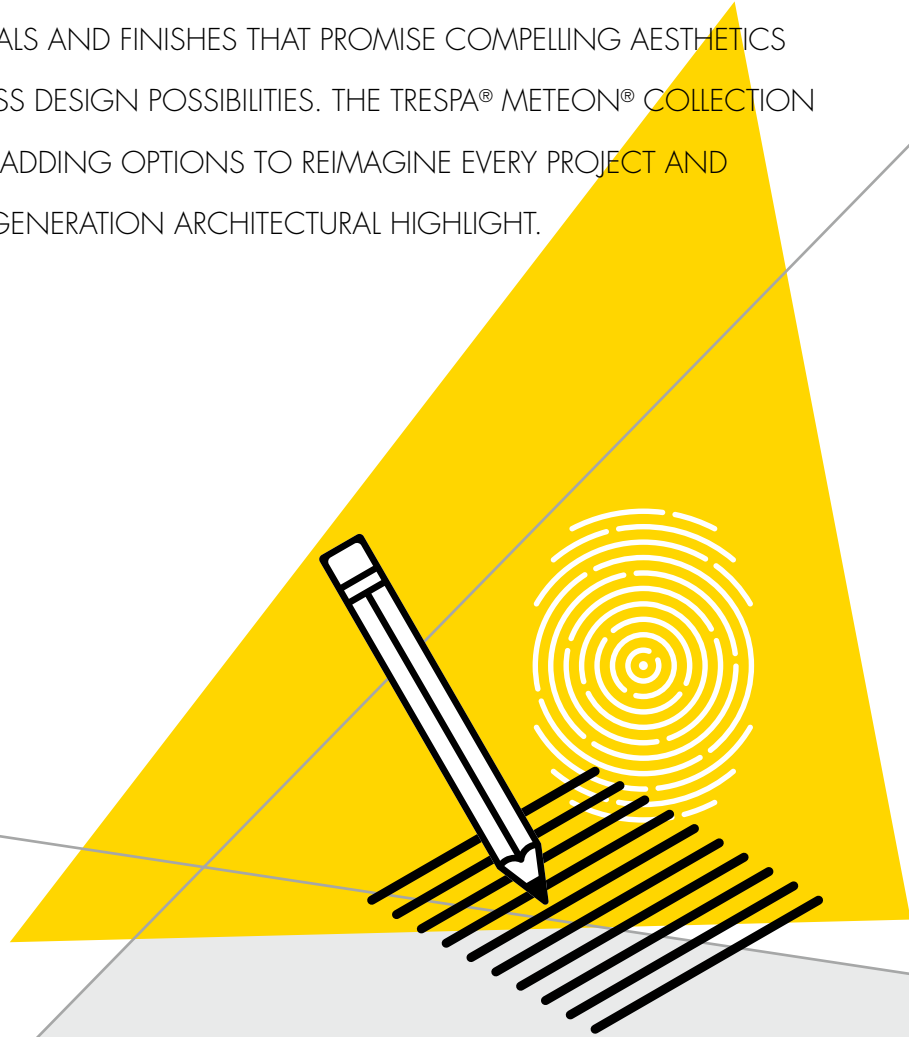


Think Trespa

TRESPA®

# WHERE COMPELLING AESTHETICS AND LIMITLESS DESIGN POSSIBILITIES MEET

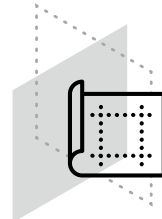
DISCOVER AN ENORMOUS RANGE OF DESIGNS. UNIQUE PATTERNS. RHYTHMS AND DEPTHS. AND ENDLESS, LONG-LASTING COLOURS. ALL BROUGHT TOGETHER IN HIGH-END MATERIALS AND FINISHES THAT PROMISE COMPELLING AESTHETICS AND ALMOST LIMITLESS DESIGN POSSIBILITIES. THE TRESPA® METEON® COLLECTION OFFERS HIGH-END CLADDING OPTIONS TO REIMAGINE EVERY PROJECT AND DESIGN YOUR NEXT-GENERATION ARCHITECTURAL HIGHLIGHT.



Create perfect one-of-a-kind effects. Or simply look for other value-adding options to determine a distinctive look and underline the qualities of a building. All according to your vision and ideas. It's now possible, with Trespa® Meteon®.

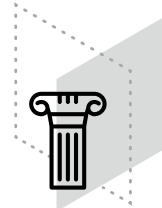
## EVERYTHING YOU WANT

This stunning collection features cladding panels for innovative and functional ventilated façade systems, balconies, and sunblind solutions. Available in a broad range of looks, such as Metallics, Lumen, Focus, Naturals and Woods. You even can pick different colours and finishes. Allowing you to realize almost everything you want, exactly in the way you want.



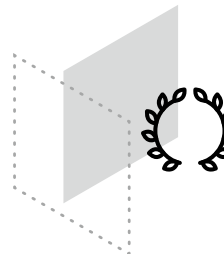
## LONG-LASTING ENJOYMENT

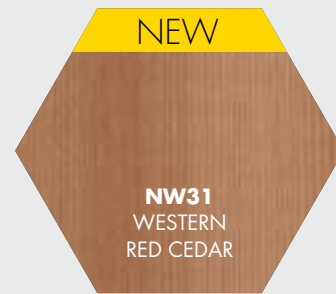
The entire collection is highly weather resistant, so sun and rain will have no significant effect on a panel's surface. They're also easy to clean and highly scratch and impact resistant. And they all come with a 10-year limited warranty.



## HIGH-END QUALITY

Trespa® Meteon® is a decorative high-pressure compact laminate (HPL) with an integral surface manufactured using Trespa's unique in-house technology: Electron Beam Curing (EBC). The blend of up to 70% natural fibres and thermosetting resins, manufactured under high pressures and temperatures, yields a highly stable, dense panel with good strength-to-weight ratio.





METEON® WOOD

# NATURE AT ITS BEST

Wood structures that tell a story. Tones that either breathe more warmth or convey coolness. And endless possibilities that bring natural textures (or finishes) to life. The Trespa® Meteon® Wood collection is nature at its best. Providing you with wood looks that are indistinguishable from the real thing, this collection brings your wood ideas perfectly to life. From fresh contemporary designs to classic weathered looks – the distinctive designs make it possible to make details more eye-catching and façades even more standout.

With the Trespa® Meteon® Wood collection, you can unleash your ideas in new ways, while creating tomorrow's wood-inspired designs. For a timeless appearance.



DISCOVER THE TRESPA® METEON® WOOD COLLECTION AND REIMAGINE YOUR NEXT PROJECT



## FINISHES



For more information on the finishes please see page 18

WOOD RANGE  
NEW ADDITION

WESTERN  
RED CEDAR  
NW31

# WESTERN RED CEDAR COLOURED BY THE WARMTH OF THE EARTH

When travelling into the Pacific Northwest, one cannot fail to be amazed by its scenery and landscape. Known for its stunning, reddish brown forest, it is a place of peace, where nature rules. Here, Thuja Plicata is among the most widespread of trees, giving this area its remarkable character. The wood from these evergreen coniferous trees is warm and strong, and known for its beautiful texture and even wood grain, which interacts beautifully with light. Whether hiking through the lush forests and mountainsides or forested swamps and streambanks, the Thuja Plicata – also known as western red cedar – is always breath-taking, filling the area with a warm, colourful atmosphere. That same warmth, with its light-interacting features, is now captured in our new wood decor. We hope it will inspire you with new designs and ideas.



DISCOVER OUR NEW WESTERN RED CEDAR  
AND REIMAGINE YOUR NEXT PROJECT

DOPIEWO HIGH SCHOOL

# A WINNING COMBINATION: OUTSTANDING WEATHER RESISTANCE WITH THE LOOK & FEEL OF WOOD SIDING

“In fact, I was very familiar with Trespa® Meteon®, and I had admired for a while its aesthetic potential, which is obvious in many architectural realisations around the world. The high school in Dopiewo provided us, at last, with the ideal opportunity to use the product: we liked the way the decors were very much ‘alive’, which we knew would appeal to the students, and we liked just as well the effective, long-lasting protection the material provides. As it happens, the contractor and the city were equally convinced by the product’s profile – which allowed us to go ahead with what had been, from the start, our preferred option.”

*Paweł Kobryński, architect FrontArchitects*

“From the start, FrontArchitects’ approach has been based of two main tenets: always design with the users in mind – and create buildings that will, at the same time, stand out and blend harmoniously into their surroundings. As we keep working on an increasing variety of projects and building types, we are constantly putting these principles front and centre. In this particular case, we wanted the children and teenagers to attend a school that would come across as warm and friendly. At the same time, we had to keep in mind that these are users whose self-expression can take, at times, the form of graffiti.”

*Paweł Kobryński, architect FrontArchitects*

**TRESPA® METEON® WOOD AND NATURALS DECORS**  
A WINNING COMBINATION



**DOIEWO HIGH SCHOOL, POLAND**

ARCHITECT	FRONTARCHITECTS
MARKET SEGMENT	EDUCATION
BUILD TYPE	NEW CONSTRUCTION
USE	FAÇADES
FIXING SYSTEM	TS700
CONSTRUCTION YR.	2015



**DISCOVER THE PROJECT**



NW16  
MILANO TERRA

NW15  
MILANO SABBIA

NW02  
ELEGANT OAK



NW02  
ELEGANT OAK



NW15  
MILANO SABBIA



NW16  
MILANO TERRA

METEON® NATURALS

# COLOURS OF NATURE

Corroded green. Verdigris tones. Weathered basalt. Materials affected by natural influences will change patterns, while different colours can appear. The Trespa® Meteon® Naturals collection is inspired by natural appearances and processes, allowing you to work and design with the true colours of nature.

The Trespa® Meteon® Naturals collection brings natural colours and structures to life. For a robust and worn natural look or to create an organic look and feel. The result is a unique collection that comes in many decors and finishes. Providing you with endless possibilities to combine them with other materials and play with the elements of nature.

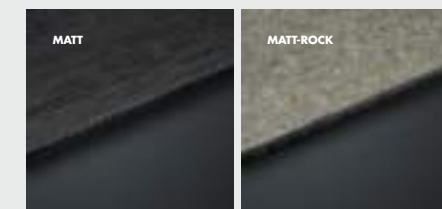


DISCOVER THE TRESPA® METEON® NATURALS COLLECTION AND REIMAGINE YOUR NEXT PROJECT



- NA15** INDIAN TERRA COTTA
- NA14** WEATHERED BASALT
- NA12** NATURAL CHALKSTONE
- NA16** BELGIAN BLUESTONE
- NA13** SILVER QUARTZITE
- NA18** NATURAL SLATE
- NA19** ITALIAN SLATE
- NA17** NATURAL GRAPHITE
- NM03** CORRODED GREEN
- NM02** FORGED ALLOY
- NM05** HARDENED BROWN
- NM08** CRAFTED WHITE
- NM06** TEMPERED GREY
- NM07** CASTED GREY
- NM01** RUSTED BROWN
- NM04** SINTERED ALLOY

## FINISHES



For more information on the finishes please see page 18

WEST CHICAGO HIGH SCHOOL

TRESPA® METEON®  
MODERNIZES  
1920S CHICAGO  
HIGH SCHOOL

**TRESPA® METEON® WOOD AND NATURALS DECORS**  
MODERNIZES 1920S CHICAGO HIGH SCHOOL



**WEST CHICAGO HIGH SCHOOL, USA**

ARCHITECT	DLA ARCHITECTS
MARKET SEGMENT	EDUCATION
BUILD TYPE	RENOVATION
USE	FAÇADES
FIXING SYSTEM	TS110
CONSTRUCTION YR.	2020



**DISCOVER THE PROJECT**



**NA14**  
WEATHERED BASALT



**NA14**  
WEATHERED BASALT

# TRESPA® METEON® WOOD AND NATURALS DECORS

## OUR DELIVERY PROGRAMME

### WOOD

Colour code	Colour name	Satin				Matt			
		■	■	■	■	■	■	■	■
NW02	Elegant Oak	■	■	■	■	■	■	■	■
NW03	Harmony Oak	■	■	■	■	■	■	■	■
NW04	Pacific Board	■	■	■	■	■	■	■	■
NW05	Loft Brown	■	■	■	■	■	■	■	■
NW06	Montreux Amber	■	■	■	■	■	■	■	■
NW07	Montreux Sunglow	■	■	■	■	■	■	■	■
NW08	Italian Walnut	■	■	■	■	■	■	■	■
NW09	Wenge	■	■	■	■	■	■	■	■
NW10	English Cherry	■	■	■	■	■	■	■	■
NW11	Santos Palisander	■	■	■	■	■	■	■	■
NW12	Natural Bagenda	■	■	■	■	■	■	■	■
NW13	Country Wood	■	■	■	■	■	■	■	■
NW14	French Walnut	■	■	■	■	■	■	■	■
NW15	Milano Sabbia	■	■	■	■	■	■	■	■
NW16	Milano Terra	■	■	■	■	■	■	■	■
NW17	Milano Grigio	■	■	■	■	■	■	■	■
NW18	Light Mahogany	■	■	■	■	■	■	■	■
NW19	Dark Mahogany	■	■	■	■	■	■	■	■
NW22	Slate Wood	■	■	■	■	■	■	■	■
NW23	Nordic Black	■	■	■	■	■	■	■	■
NW24	Greyed Cedar	■	■	■	■	■	■	■	■
NW25	Hesbania	■	■	■	■	■	■	■	■
NW26	Core Ash	■	■	■	■	■	■	■	■
NW27	Denver Oak	■	■	■	■	■	■	■	■
NW28	Halmstad	■	■	■	■	■	■	■	■
NW29	Woodstone	■	■	■	■	■	■	■	■
NW30	Tropical Ipe	■	■	■	■	■	■	■	■
NW31	Western Red Cedar	■	■	■	■	■	■	■	■

TRESPA® METEON® WOOD DECORS PANELS FEATURE A DIRECTIONAL COLOURED SURFACE. THE GRAIN OF TRESPA® METEON® WOOD DECORS RUNS THE LENGTH DIRECTION OF THE PANEL.

### NATURALS

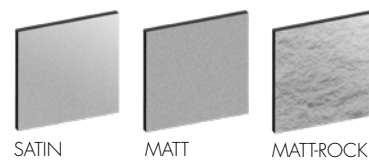
Colour code	Colour name	Matt				MattRock*	
		■	■	■	■	■	■
NA12	Natural Chalkstone	■	■	■	■	■	■
NA13	Silver Quartzite	■	■	■	■	■	■
NA14	Weathered Basalt	■	■	■	■	■	■
NA15	Indian Terra Cotta	■	■	■	■	■	■
NA16	Belgian Bluestone	■	■	■	■	■	■
NA17	Natural Graphite	■	■	■	■	■	■
NA18	Natural Slate	■	■	■	■	■	■
NA19	Italian Slate	■	■	■	■	■	■
With metallic effect							
NM01	Rusted Brown	■	■	■	■	■	■
NM02**	Forged Alloy	■	■	■	■	■	■
NM03	Corroded Green	■	■	■	■	■	■
NM04**	Sintered Alloy	■	■	■	■	■	■
NM05**	Hardened Brown	■	■	■	■	■	■
NM06**	Tempered Grey	■	■	■	■	■	■
NM07**	Casted Grey	■	■	■	■	■	■
NM08**	Crafted White	■	■	■	■	■	■

TRESPA® METEON® NATURALS PANELS FEATURE A DIRECTIONAL COLOURED SURFACE.

\* WITH SATIN REVERSE.

\*\* DECORS HAVE GLOSS ELEMENTS IN THE SURFACE.

### FINISHES



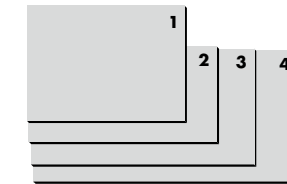
FOR TECHNICAL INFORMATION LIKE FIXING POSSIBILITIES PLEASE VISIT OUR WEBSITE [WWW.TRESPA.INFO](http://WWW.TRESPA.INFO)



### TYPES

- **SINGLE SIDED DECORATIVE** DECORATIVE SIDE WITH NON DECORATIVE BLACK REVERSE
- **DOUBLE SIDED DECORATIVE** SAME COLOUR FOR FRONT AND REVERSE SIDE OF THE PANEL
- **VARITOP** DECORATIVE SIDE WITH STANDARD WHITE DECORATIVE SATIN REVERSE (A03.0.0)
- **DUOCOLOUR** DIFFERENT COLOUR FOR FRONT AND REVERSE SIDE OF THE PANEL

### SIZE



1 2550 x 1860 mm (≈ 100 x 73 inch)

2 3050 x 1530 mm (≈ 120 x 60 inch)

3 3650 x 1860 mm (≈ 143 x 73 inch)

4 4270 x 2130 mm (≈ 168 x 83 inch)

NOTE: FULL SIZE PANELS FEATURE A SQUARENESS TOLERANCE.

### THICKNESSES

- 6 mm (≈ 1/4 inch)
- 8 mm (≈ 5/16 inch)
- 10 mm (≈ 3/8 inch)
- 13 mm (≈ 1/2 inch)

### NOTE

FOR AVAILABLE SHEET SIZES, THICKNESSES AND FINISHES IN YOUR COUNTRY, PLEASE CHECK [TRESPA.INFO](http://TRESPA.INFO) FOR THE DETAILED AND UP TO DATE DELIVERY PROGRAMME AND MATERIAL PROPERTY DATASHEET. ALTERNATIVELY YOU CAN USE THE PRODUCT SELECTOR ON [TRESPA.COM](http://TRESPA.COM) (AFTER CHOOSING THE COUNTRY WHERE THE PROJECT IS LOCATED).

**ORDER YOUR FREE WOOD SAMPLE**



**ORDER YOUR FREE NATURALS SAMPLE**



## CONTACT US

### TRESPA INTERNATIONAL B.V.

P.O. Box 110, 6000 AC Weert  
Wetering 20, 6002 SM Weert  
The Netherlands  
www.trespa.com

### UNITED KINGDOM & IRELAND

#### TRESPA UK LTD.

Coast Road  
North Shields  
Tyne & Wear, NE29 8RE  
United Kingdom  
Tel: 0808-2340268  
Info.UK@Trespa.com

### EMEA & APAC EXPORT CUSTOMER SERVICE DESK

Tel: +31 (0) 495 458 839  
Info.Export@Trespa.com

## VISIT US

### TRESPA DESIGN CENTRE WEERT

Wetering 20  
6002 SM Weert  
The Netherlands  
Tel: +31 (0) 495 458 845  
TDC.Weert@Trespa.com  
www.trespa.com

### TRESPA DESIGN CENTRE BARCELONA

Calle Ribera 5,  
08003 Barcelona  
Spain  
Tel: +34 (0) 93 295 4193  
TDC.Barcelona@Trespa.com  
www.trespa.com

## FOLLOW US



## DISCLAIMER

### GENERAL

These terms apply to the use of this document and such use automatically means that the other party agrees to these terms. The information provided by Trespa International B.V. ("Trespa") in this document is solely indicative. Trespa is unable to warrant the accuracy and completeness of this information. Trespa may change the information included in this document at any time and without further notice. Trespa's customers and third parties must ascertain that they have the most recent document (for the most recent version, please consult: [www.trespa.com](http://www.trespa.com)). No rights can be derived from the information provided; the use of the information is at the other party's risk and responsibility. Trespa does not warrant that the information in this document is suitable for the purpose for which it is consulted by the other party. This document does not contain any design, structural calculation, estimate or other warranty or representation that customers and third parties may rely on. This document does not guarantee any properties of Trespa products. Colours used in Trespa's communications (including but not limited to printed matter) and in samples of Trespa's products may differ from the colours of the Trespa products to be supplied. Samples are not intended for use in product tests and are not representative of characteristics of the Trespa

products. Trespa's products and samples are produced within the specified colour tolerances and the colours (of production batches) may differ, even if the same colour is used. The viewing angle also influences the colour perception. Metallics panels feature a surface whose colour appears to change based on the direction from which it is viewed. The specified colour stability and colour specifications relate only to the decorative surface of the Trespa products, not to the core material and samples of the Trespa products. Trespa products are delivered ex-works with straight, sawn sides. Customers and third parties must have a professional adviser inform them about (the suitability of) the Trespa products for all desired applications and about applicable laws and regulations. Trespa does not warrant the above. The most recent version of the current delivery programme and the Material Properties Datasheet can be found at [www.trespa.info](http://www.trespa.info). Only the information in the most recent and valid Material Property Datasheet should be used to select and provide advice regarding Trespa products. Trespa reserves the right to change (the specifications for) its products without prior notice.

### LIABILITY

Trespa is not liable (neither contractual nor non-contractual) for any damage arising from or

related to the use of this document, except if and to the extent that such damage is the result of wilful misconduct or gross negligence on the part of Trespa and/or its management. The limitation of liability applies to all parties affiliated with Trespa, including but not limited to its officers, directors, employees, affiliated enterprises, suppliers, distributors, agents, and representatives.

### GENERAL CONDITIONS

All oral and written statements, offers, quotations, sales, supplies, deliveries and/or agreements and all related activities of Trespa are governed by the Trespa General Terms and Conditions of Sale (*Algemene verkoopvoorwaarden Trespa International B.V.*) filed with the Chamber of Commerce and Industry for Noord- en Midden- Limburg in Venlo (NL) on 9th May 2023 under number 24270677, which can be found on and downloaded from the Trespa website, [www.trespa.com/documentation](http://www.trespa.com/documentation). All oral and written statements, offers, quotations, sales, supplies, deliveries and/or agreements and all related work of Trespa North America, Ltd. are governed by the Trespa North America General Terms and Conditions of Sale, which can be found on and downloaded from the Trespa website, [www.trespa.com/documentation](http://www.trespa.com/documentation). A copy of these general conditions of sale will be provided free of

charge on request. All general terms and conditions other than the conditions mentioned above are dismissed and do not apply, regardless of whether such terms and conditions are referred to on requests for offers, offer confirmations, stationery and/or other documents of the other party, even if Trespa does not expressly object to such terms and conditions.

### INTELLECTUAL PROPERTY

All intellectual property rights and other rights regarding the content of this document (including logos, text and photographs) are owned by Trespa and/or its licensors. Any use of the content of this document, including distribution, reproduction, disclosure, storage in an automated data file or the dispatch of such a file without Trespa's prior written consent is explicitly prohibited. \* Trespa, Meteon, Athlon, TopLab, TopLab<sup>PLUS</sup>, TopLab<sup>PLUS ALIGN</sup>, TopLab<sup>ECO-FIBRE</sup>, TopLab<sup>VERTICAL</sup>, TopLab<sup>BASE</sup>, Virtuon, Izeon, Pura, Pura NFC, Volkern, Trespa Essentials and Mystic Metallics are registered trademarks of Trespa.

### QUESTIONS

Should you have any questions or comments, please do not hesitate to contact Trespa.



EN-GB2427-432622 ■ VERSION 2.0  
BROCHURE CODE EN-GB2427 ■ DATE 10-2023

VISIT [TRESPA.COM](http://TRESPA.COM) FOR THE MOST  
UP TO DATE VERSION OF THIS DOCUMENT.

TRESPA®